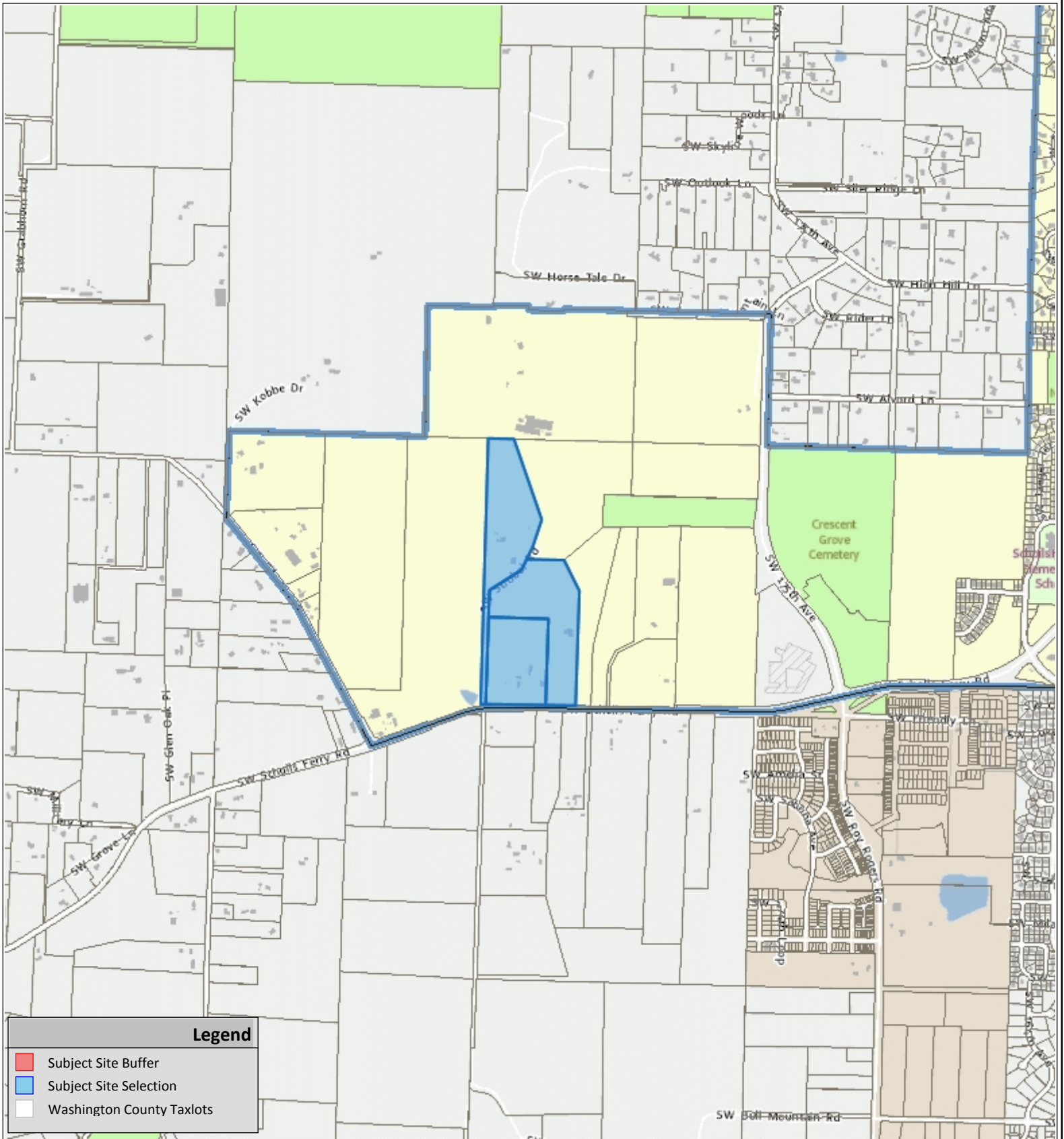


VICINITY MAP



Legend

- Subject Site Buffer
- Subject Site Selection
- Washington County Taxlots



**THE RIDGE AT SOUTH COOPER MOUNTAIN
MULTI-FAMILY RESIDENTIAL - PHASE 2 OF THE PLANNED
UNIT DEVELOPMENT (PUD) DR2017-0075**

**COMMUNITY DEVELOPMENT DEPARTMENT
Planning Division**

The information supplied in this application represents the best data available at the time of publication. City of Beaverton GIS makes no claims, representations, or warranties as to its accuracy or completeness.

07/17/2017

Taxlot No:
2S1060000500
2S1060000600
2S1060000301

N
Application #
See Notice