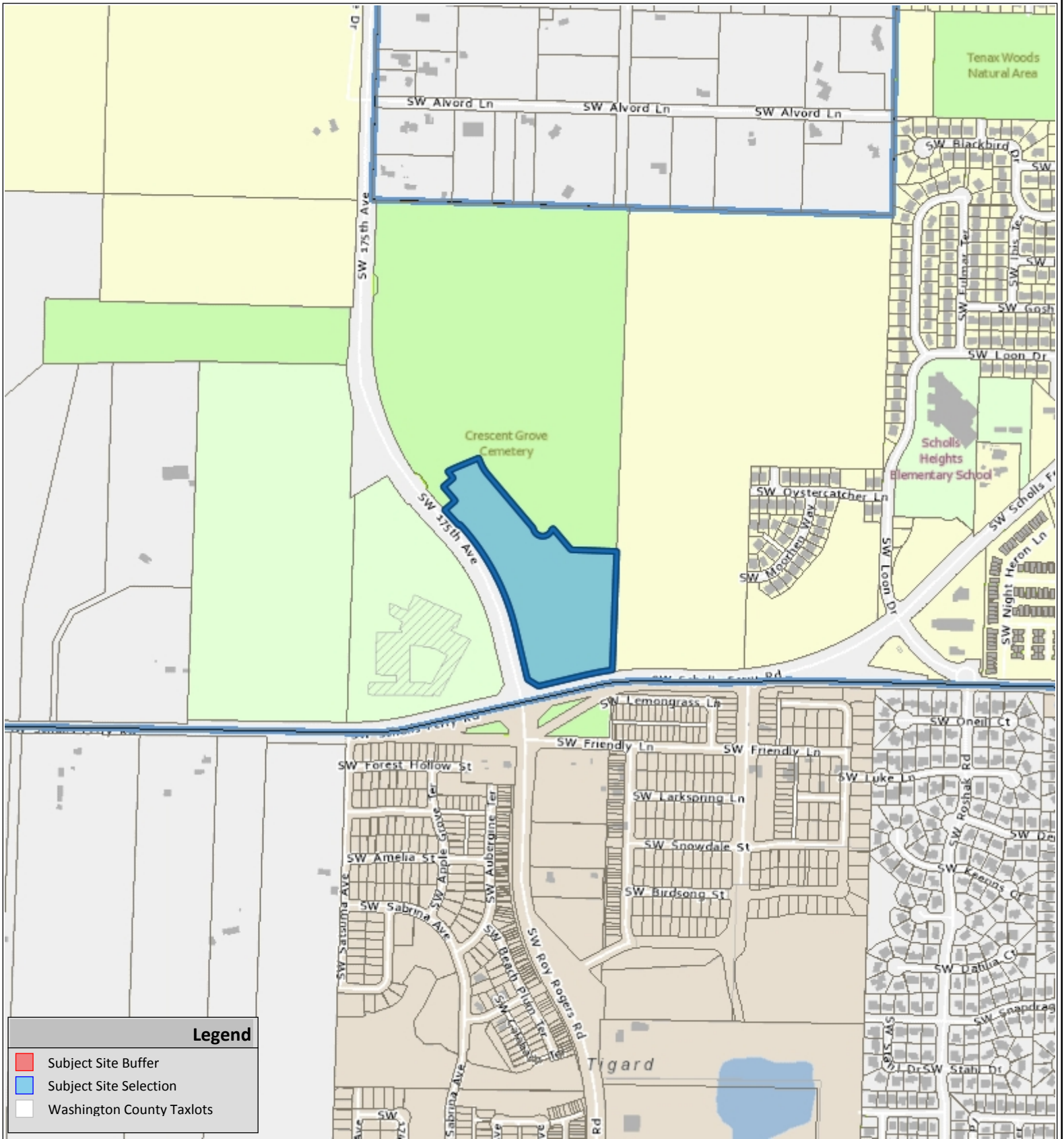


VICINITY MAP



Legend

- Subject Site Buffer
- Subject Site Selection
- Washington County Taxlots



SOUTH COOPER MOUNTAIN HEIGHTS MULTI-FAMILY MODIFICATIONS
D12018-0002/DR2018-0061

COMMUNITY DEVELOPMENT DEPARTMENT
Planning Division

The information supplied in this application represents the best data available at the time of publication. City of Beaverton GIS makes no claims, representations, or warranties as to its accuracy or completeness.

05/31/2018

Taxlot No:
 2S106AC00200

N

Application #
 See Notice