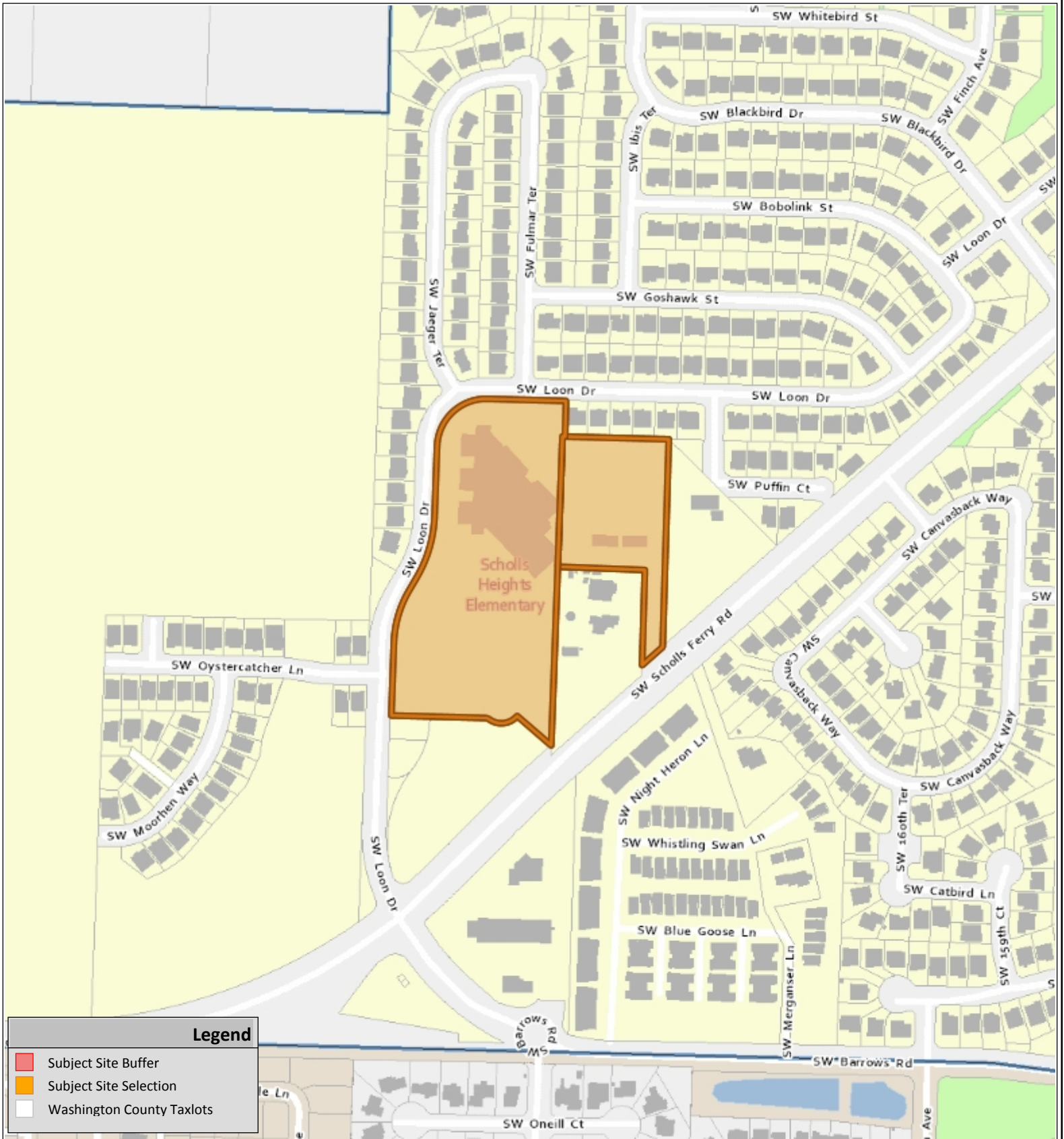


VICINITY MAP



Legend

- Subject Site Buffer
- Subject Site Selection
- Washington County Taxlots



SCHOLLS HEIGHTS ELEMENTARY SCHOOL REPLAT LD2018-0012

COMMUNITY DEVELOPMENT DEPARTMENT
Planning Division

The information supplied in this application represents the best data available at the time of publication. City of Beaverton GIS makes no claims, representations, or warranties as to its accuracy or completeness.

04/05/2018

Taxlot No:
2S105BB00100
2S105BB03800

N

Application #
See Notice