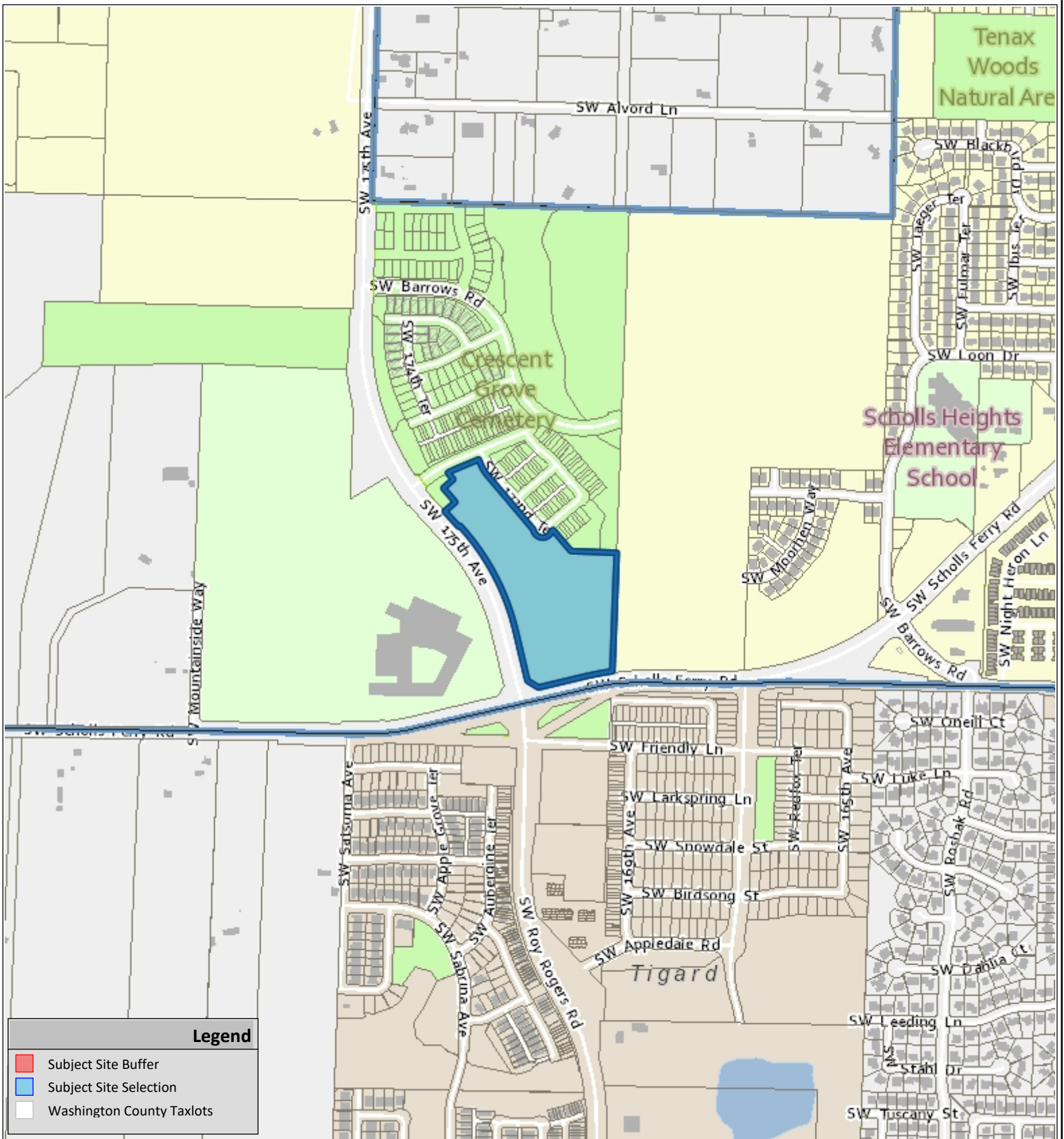


# VICINITY MAP



**Legend**

- Subject Site Buffer
- Subject Site Selection
- Washington County Taxlots



**SOUTH COOPER MOUNTAIN HEIGHTS MULTI-FAMILY SPANOS**  
 DR2018-0165/LD2018-0139/LD2018-0140

**COMMUNITY DEVELOPMENT DEPARTMENT**  
 Planning Division

The information supplied in this application represents the best data available at the time of publication. City of Beaverton GIS makes no claims, representations, or warranties as to its accuracy or completeness.

**02/19/2019**

**Taxlot No:**  
 2S106AC00200

N

Application #  
 See Notice