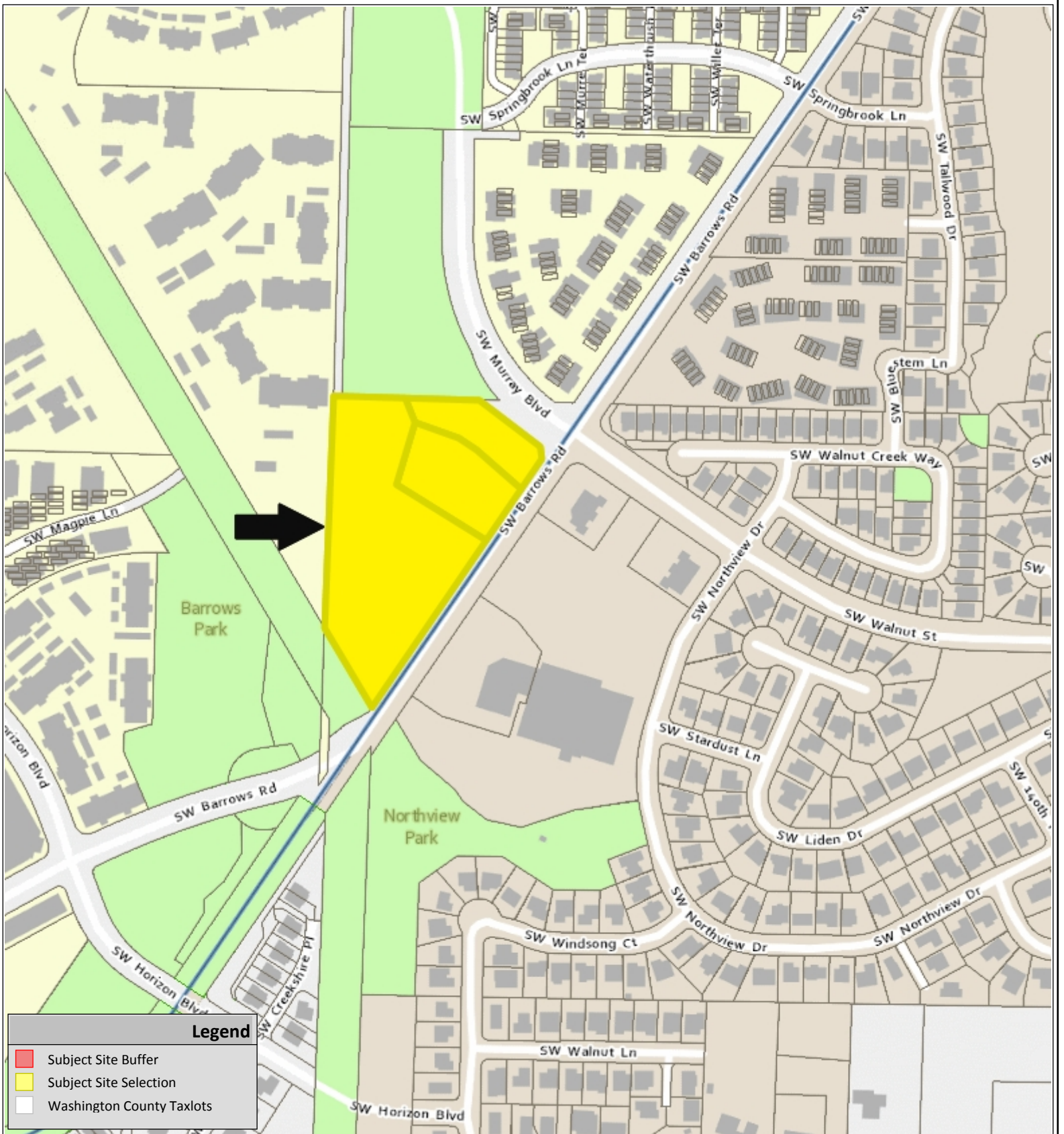


# VICINITY MAP

# EXHIBIT A



**Legend**

- Subject Site Buffer
- Subject Site Selection
- Washington County Taxlots



**MORNINGSTAR SENIOR LIVING OF BEAVERTON**  
**CU2016-0007 / DR2016-0071 / LD2016-0010 /**  
**TP2016-0008**

**COMMUNITY DEVELOPMENT DEPARTMENT**  
**Planning Division**

The information supplied in this application represents the best data available at the time of publication. City of Beaverton GIS makes no claims, representations, or warranties as to its accuracy or completeness.

**10/27/2016**

**Taxlot No:**  
 2S104BB07300  
 2S104BB07200  
 2S104BB07150

N

Application #  
 See Notice