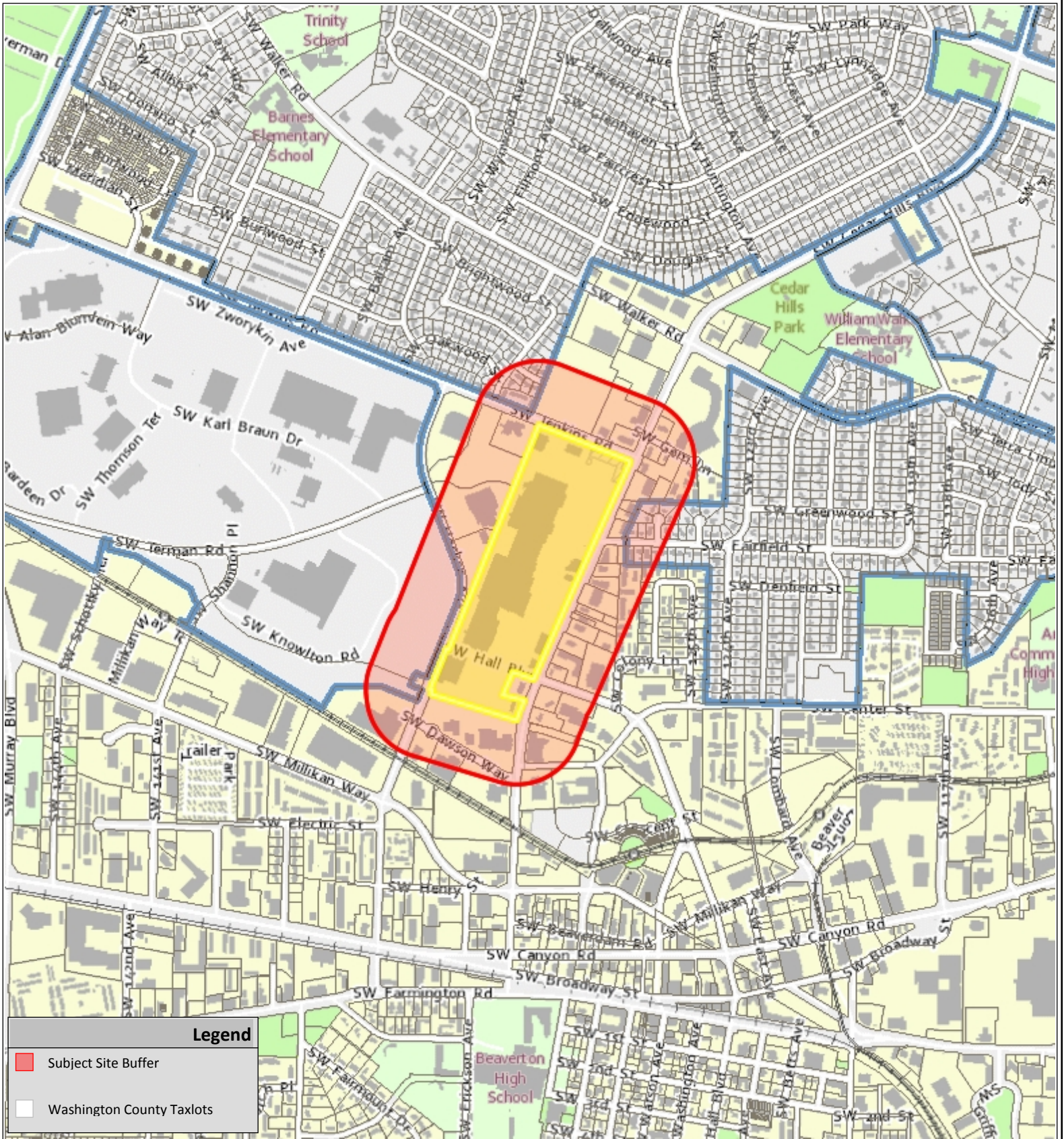


VICINITY MAP



Legend


- Subject Site Buffer
- Washington County Taxlots



CEDAR HILLS CROSSING PHASE 2 & 3 BUILDING 19
MODIFICATIONS
DR2017-0065/DR2017-0066/LO2017-0001
COMMUNITY DEVELOPMENT DEPARTMENT
Planning Division

The information supplied in this application represents the best data available at the time of publication. City of Beaverton GIS makes no claims, representations, or warranties as to its accuracy or completeness.

08/18/2017
Taxlot No:
 N/A


Application #
 See Notice