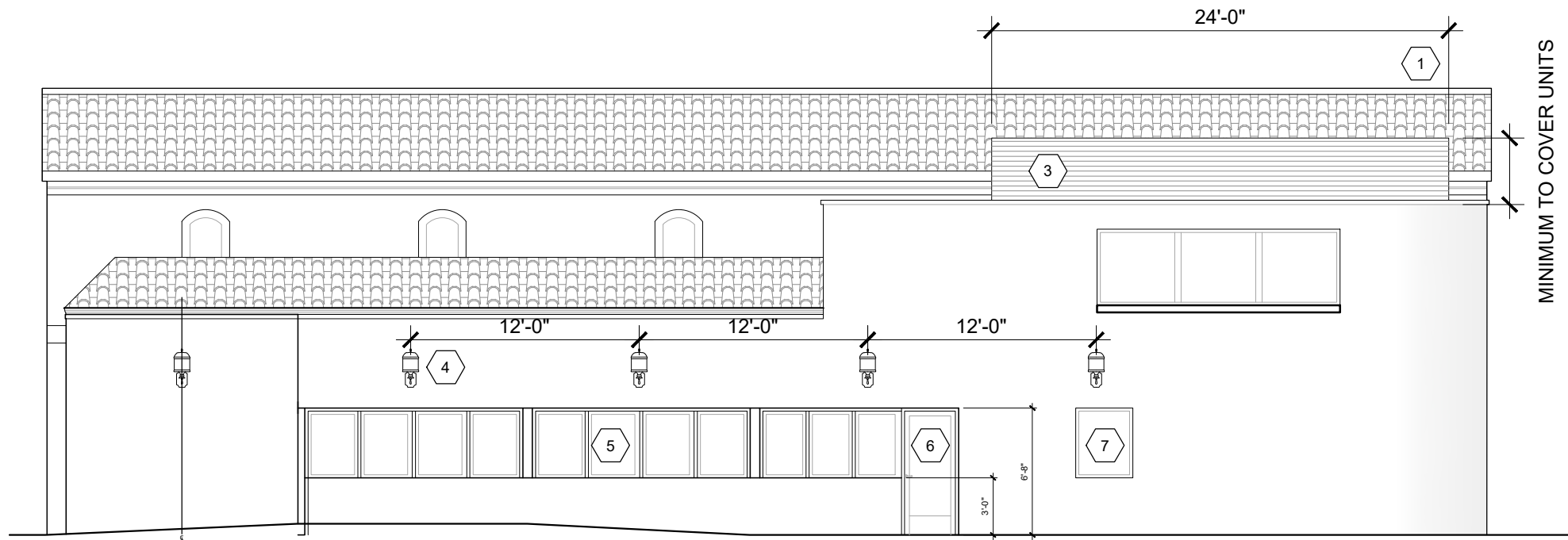
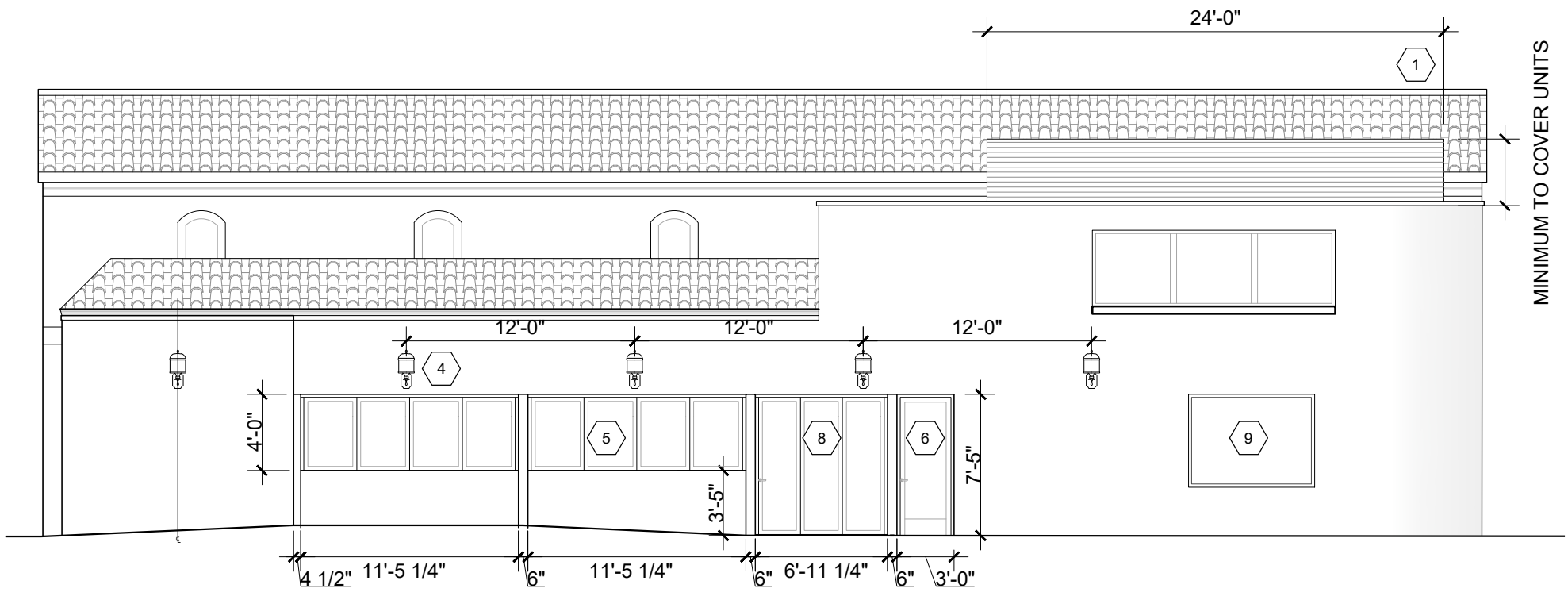


Received
 Planning Division
 10/12/2020



SOUTH ELEVATION APPROVED DESIGN

1 APPROVED DESIGN SOUTH ELEVATION
 1/8" = 1'-0"



SOUTH ELEVATION PROPOSED REVISION

2 SOUTH ELEVATION PROPOSED REVISION
 1/8" = 1'-0"

- 1 CHIMNEY VENT REMOVED (SEISMIC HAZARD) AND PORTION OF REROOFED
- 2 (N) PERIOD-CORRECT ARCHED LOUVERED WINDOW TO REPLACE DOOR
- 3 (N) ROOF MECHANICAL EQUIPMENT SCREENING METAL PANEL
- 4 (N) EXTERIOR SCONCES
- 5 (N) SLIDING STOREFRONT WINDOW
- 6 (N) EXIT DOOR - TEMPERED U:0.32
- 7 (N) WINDOW
- 8 (N) EXTEND PROPOSED WINDOWS TO FLOOR
- 9 (N) WINDOW IN EXISTING OPENING

BANK OF BEAVERTON BUILDING
 ALTERATION OF HISTORIC LANDMARK
 4500 SW WATSON AVE
 BEAVERTON, OR 97005
 09/28/2020

**Architecture
 + Interiors**
 Design Department Architecture
 511 SW 10th Ave, Suite 1004
 Portland, OR 97205