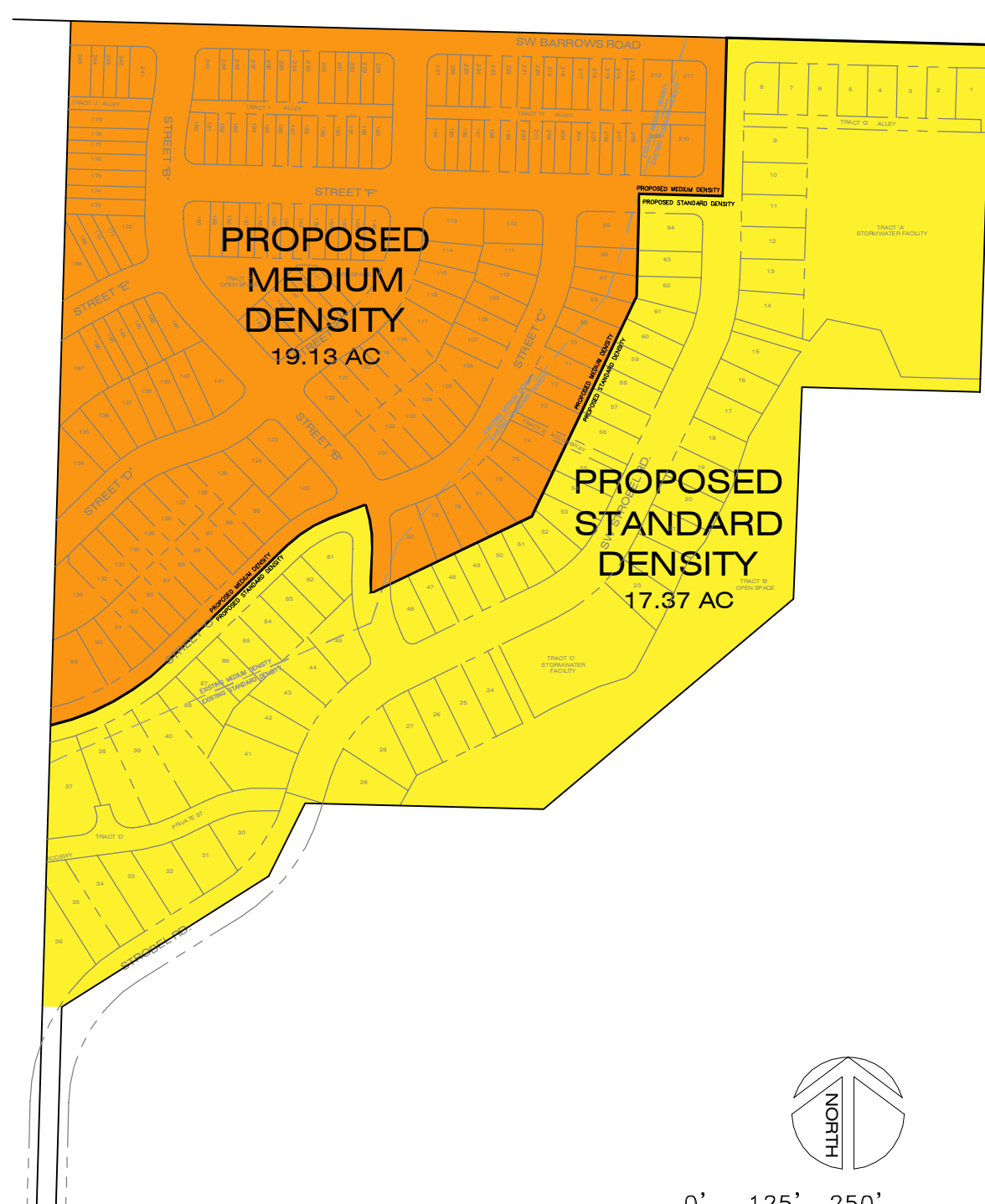
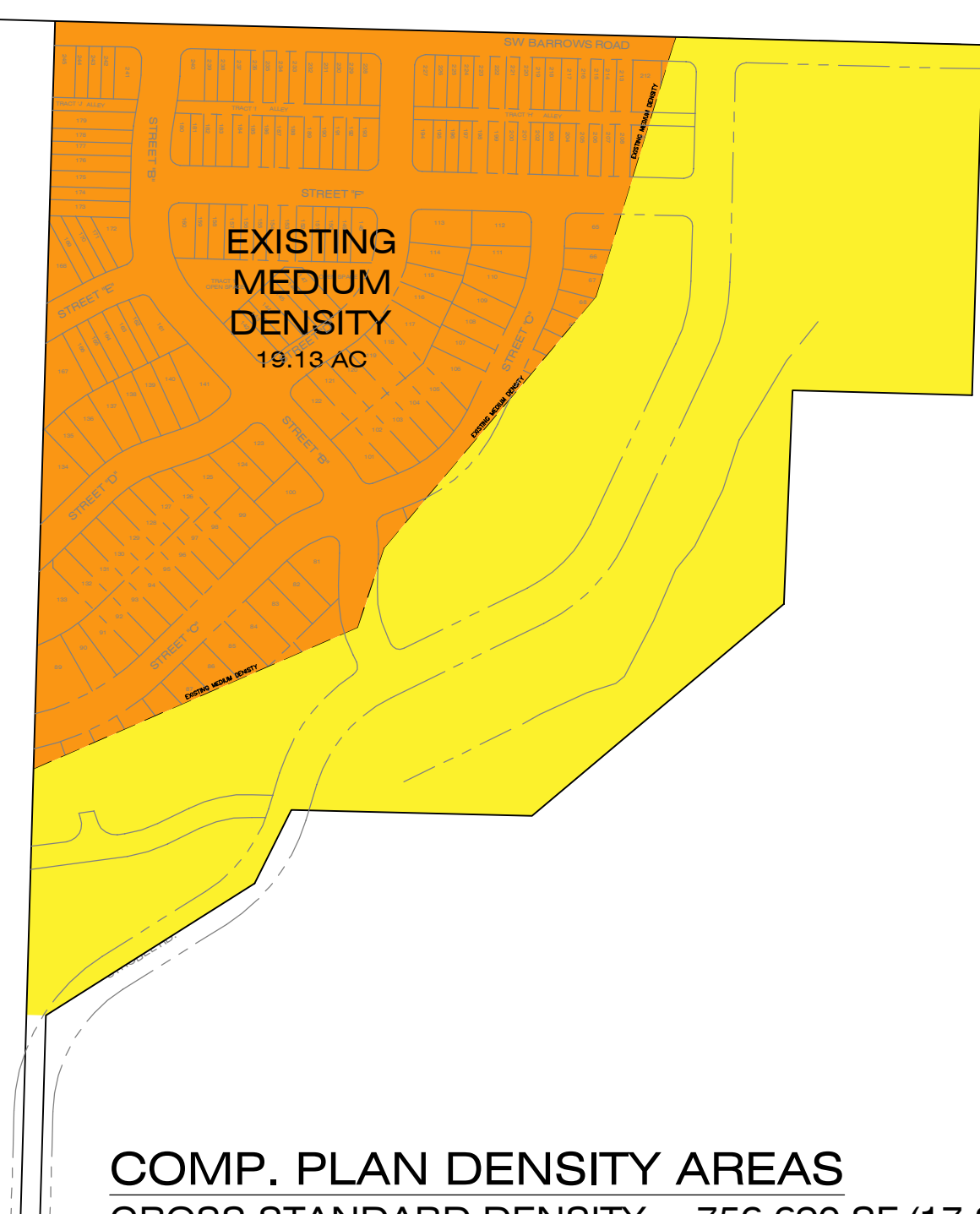


COMPREHENSIVE PLAN EXHIBIT

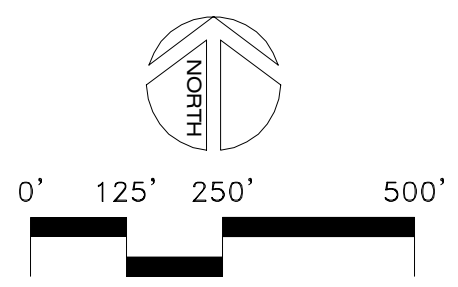
SCHOLLS VALLEY HEIGHTS

EXISTING PLAN

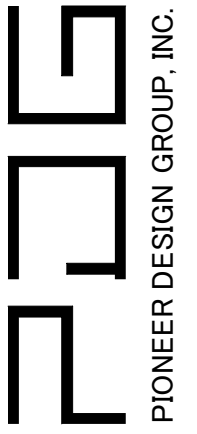
PROPOSED PLAN



COMP. PLAN DENSITY AREAS
 GROSS STANDARD DENSITY = 756,690 SF (17.37 AC)
 GROSS MEDIUM DENSITY AREA = 833,559 SF (19.13 AC)



9020 SW WASHINGTON SQUARE RD.
 SUITE 170
 PORTLAND, OREGON 97223
 p 503.843.8286
 f 844.715.4743
 www.pd-grp.com



PIONEER DESIGN GROUP, INC.

Designed by	Date
Drawn by	Date
Reviewed by	Date
Project No. 332-001	REF.
Horiz. Scale: 1"=250'	
Vert. Scale:	

Project
 SCHOLLS VALLEY HEIGHTS
No.
 332-001
Type
 PLANNING
Sheet