

# Scholls Heights Apartments

DR2021-0163 / TP2021-0012

Presentation to the Beaverton Planning Commission  
April 27, 2022



# Project Team

## Applicant:

- Brian Cho, Holland Partner Group

## Design Team:

- Dean Masukawa, LRS Architects – Senior Associate, Project Manager
- Steve DeMonte, LRS Architects – Project Architect
- Kyle Childers, PE, Otak – Civil Engineer, Project Manager
- Li Alligood, AICP, Otak – Land Use Planner
- Gabriel Kruse, PLA, Otak – Landscape Architect

# Project Information

## Site Information

- Lot 11/ South Phase of Scholls Heights Subdivision/PUD
- 11.48 acres
- Design Review for 216 apartments in 8 buildings, associated infrastructure and landscaping
- Removal of 9 Community Trees

# Site Plan



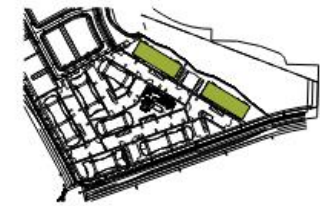
# Elevations



G1N - NE AND SW ELEVATIONS



G1N - NW AND SE ELEVATIONS



Scale: 1/8" = 1'-0"



# Elevations

BUILDING TYPE G3N



G3N - NORTH AND SOUTH ELEVATIONS



G3N - EAST AND WEST ELEVATIONS



Scale: 1/8" = 1'-0"

# Landscape Plan



# Request

Approval of the application tonight with conditions of approval as recommended by staff



**Thank you!**