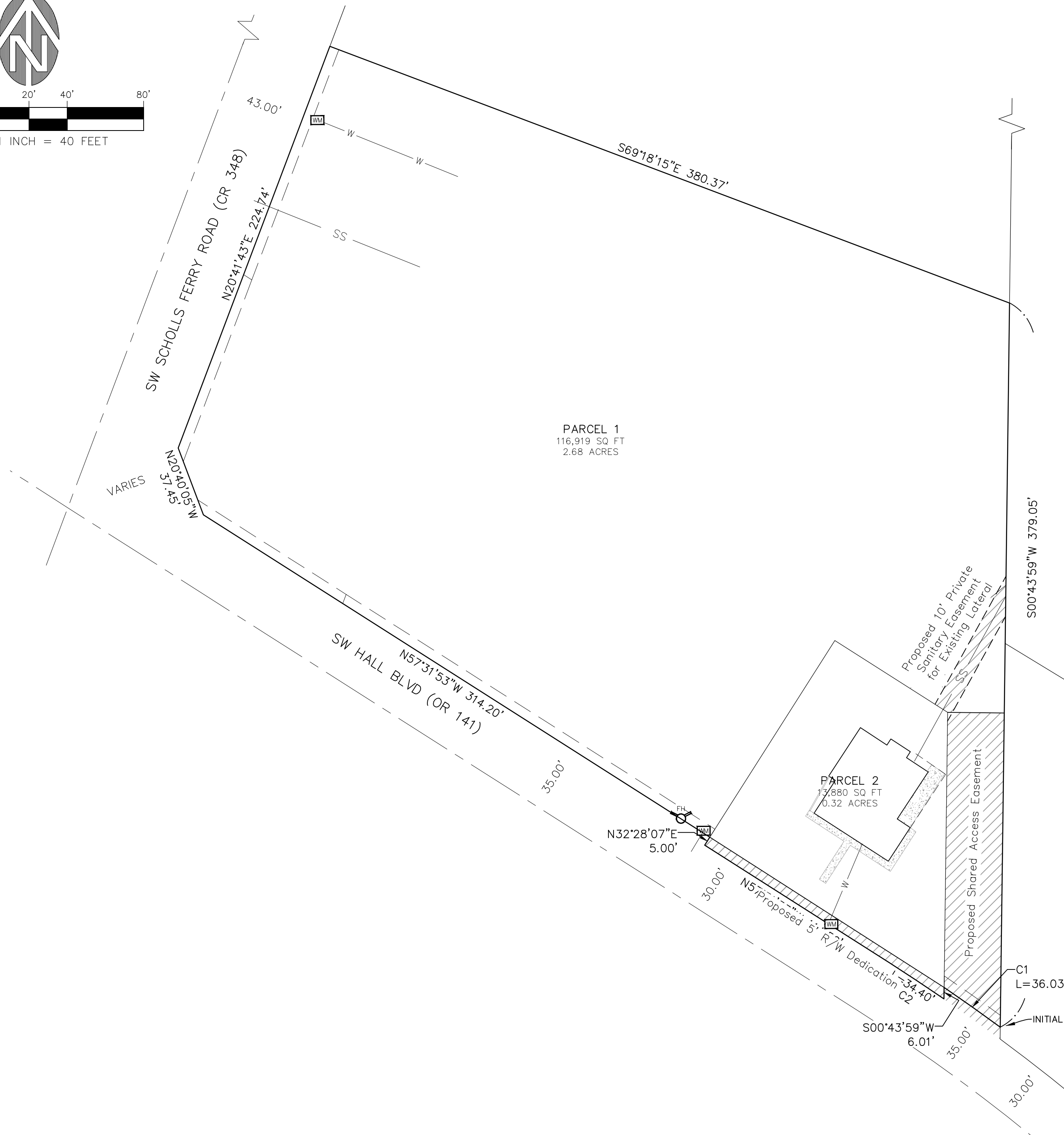


Received
Planning Division
5/11/2022

EXISTING UTILITY LOCATION EXHIBIT
For Progress Square Partition
City of Beaverton File #LD2022-0009



LEGEND

- FOUND MONUMENT AS NOTED
- SET 5/8" X 30" IR W/YPC MARKED "WESTLAKE CONSULTANTS" SET ON _____
- ◐ SET 1-1/8" COPPER PLUG MARKED "WESTLAKE CONSULTANTS" SET ON _____
- IR IRON ROD
- IP IRON PIPE
- MB MONUMENT BOX
- W/ WITH
- YPC YELLOW PLASTIC CAP
- AL ALUMINUM CAP
- DOC. NO. DOCUMENT NUMBER, WASHINGTON COUNTY DEED RECORDS
- SN SURVEY NUMBER, WASHINGTON COUNTY SURVEY RECORDS
- CR COUNTY ROAD
- R/W RIGHT-OF-WAY
- "SF" SW SCHOLLS FERRY ROAD
- "HB" SW HALL BOULEVARD
- RAR RESTRICTED ACCESS RIGHTS
- SQ FT SQUARE FEET
- [DATA(#)] RECORDS DATA AND REFERENCE

SURVEYED FOR:
ARGONAUT INVESTMENTS

SURVEYED BY:
WESTLAKE CONSULTANTS, INC.
15115 S.W. SEQUOIA PARKWAY, SUITE 150
TIGARD, OREGON 97224
(503) 684-0652

[Rtext] (Rtext)