

FOR: EVERGREEN NW, LLC  
477 NE 62ND AVE.  
HILLSBORO, OR 97124

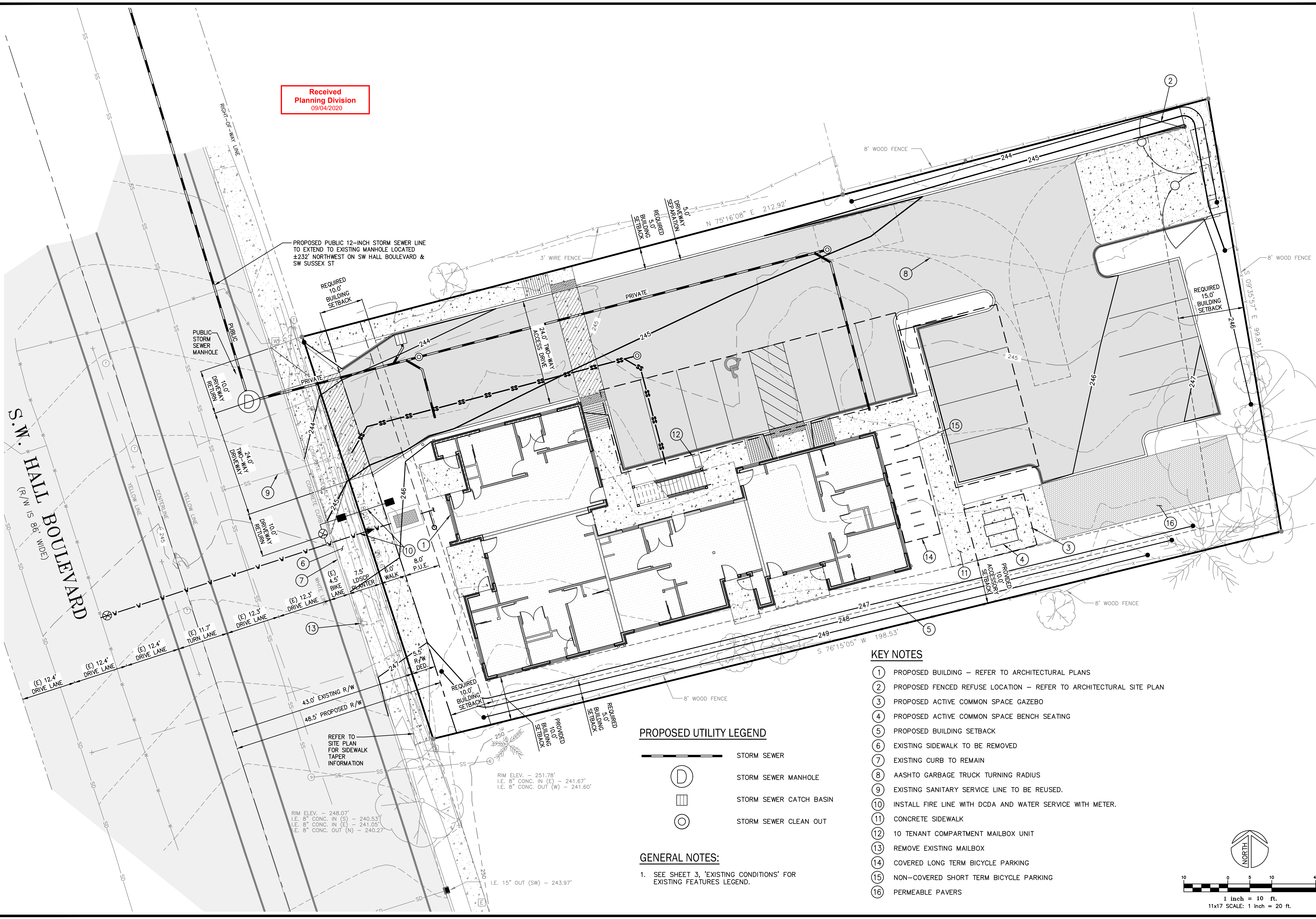
SITE: TAX MAP 1S2 22BC  
TAX LOT 300  
BEAVERTON, OREGON

SW HALL BLVD.  
10-UNIT APARTMENT PROJECT  
N0653

PRELIMINARY UTILITY PLAN

REVISION	BY	DATE
1		
2		
3		
4		
5		
6		
7		

DESIGNED	DRAWN	REVIEWED	SUBMITTAL



Received  
Planning Division  
09/04/2020

PROPOSED PUBLIC 12-INCH STORM SEWER LINE TO EXTEND TO EXISTING MANHOLE LOCATED ±232' NORTHWEST ON SW HALL BOULEVARD & SW SUSSEX ST

REQUIRED 10.0' BUILDING SETBACK

REQUIRED 15.0' BUILDING SETBACK

RIM ELEV. - 248.07'  
I.E. 8" CONC. IN (S) - 240.53'  
I.E. 8" CONC. IN (E) - 241.05'  
I.E. 8" CONC. OUT (N) - 240.27'

RIM ELEV. - 251.78'  
I.E. 8" CONC. IN (E) - 241.67'  
I.E. 8" CONC. OUT (W) - 241.60'

I.E. 15" OUT (SW) - 243.97'

PROPOSED UTILITY LEGEND

- STORM SEWER
- STORM SEWER MANHOLE
- STORM SEWER CATCH BASIN
- STORM SEWER CLEAN OUT

GENERAL NOTES:

1. SEE SHEET 3, 'EXISTING CONDITIONS' FOR EXISTING FEATURES LEGEND.

KEY NOTES

- 1 PROPOSED BUILDING - REFER TO ARCHITECTURAL PLANS
- 2 PROPOSED FENCED REFUSE LOCATION - REFER TO ARCHITECTURAL SITE PLAN
- 3 PROPOSED ACTIVE COMMON SPACE GAZEBO
- 4 PROPOSED ACTIVE COMMON SPACE BENCH SEATING
- 5 PROPOSED BUILDING SETBACK
- 6 EXISTING SIDEWALK TO BE REMOVED
- 7 EXISTING CURB TO REMAIN
- 8 AASHTO GARBAGE TRUCK TURNING RADIUS
- 9 EXISTING SANITARY SERVICE LINE TO BE REUSED.
- 10 INSTALL FIRE LINE WITH DCDA AND WATER SERVICE WITH METER.
- 11 CONCRETE SIDEWALK
- 12 10 TENANT COMPARTMENT MAILBOX UNIT
- 13 REMOVE EXISTING MAILBOX
- 14 COVERED LONG TERM BICYCLE PARKING
- 15 NON-COVERED SHORT TERM BICYCLE PARKING
- 16 PERMEABLE PAVERS

