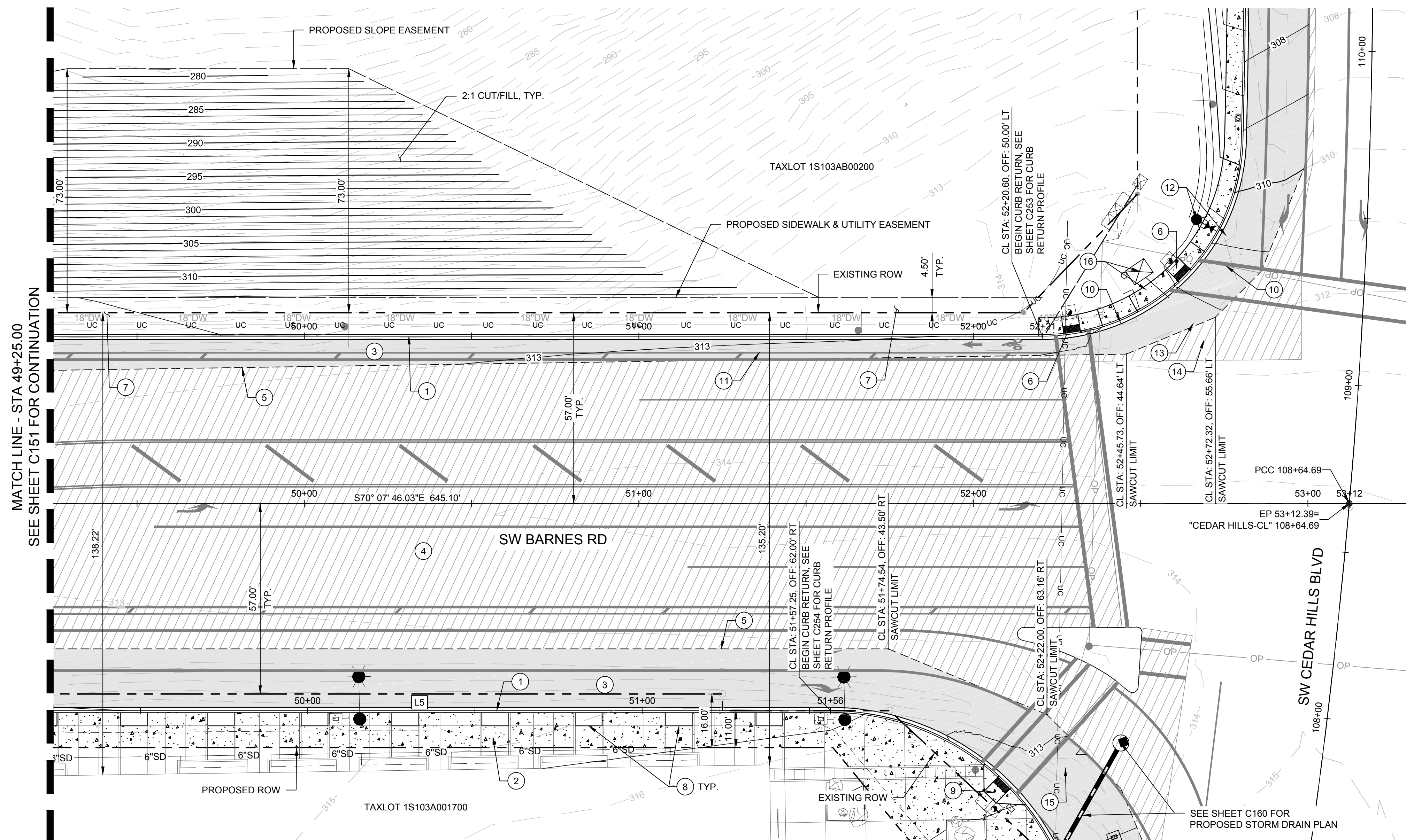


**GENERAL NOTES**

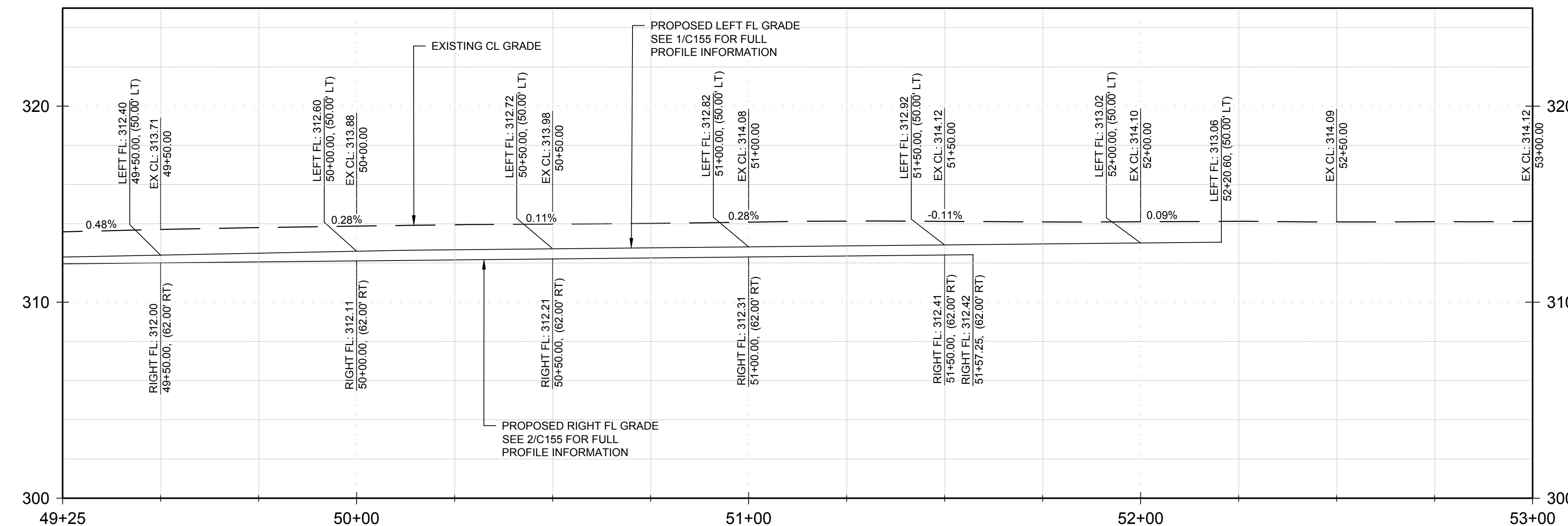
- SEE SHEET C450 FOR TYPICAL ROADWAY SECTIONS.
- SEE SHEET C155 FOR PROPOSED FLOWLINE PROFILES.
- SEE SHEETS C250-C254 FOR PROPOSED CURB RETURN AND CURB RAMP DETAILS.
- SEE SHEET L150 FOR STREET TREE PLAN.
- SEE SHEET IL150 FOR ILLUMINATION PLAN.
- SEE SHEET SS154 FOR SIGNING AND STRIPING PLAN.
- SEE SHEET IC100 FOR INTERCONNECT PLAN.
- MILL & FILL: AFTER 'T' CUT PATCH BACKS, MILL 2" DEPTH AND MACHINE LAY HOT MIX WITH THE ASSOCIATED ROAD WORK. FINAL DETERMINATION OF MILL & FILL AREA IS AT THE DISCRETION OF THE COUNTY INSPECTOR.
- WATER LINE NETWORK PER SEPARATE PERMIT (SEE TVWD PLANS).
- SEE SHEETS C160-C162 FOR SW CEDAR HILLS BLVD IMPROVEMENT PLANS.
- ROADWAY DESIGN SPEED IS 40 MPH.
- ALL STORM DRAIN PIPE SHALL BE PVC ASTM 3034 (SDR 35) UNLESS OTHERWISE NOTED ON PLANS.

**SW BARNES RD - RIGHT FL LINE & CURVE TABLE**

| Number | Radius | Length | Line/Chord Direction |
|--------|--------|--------|----------------------|
| L5     |        | 256.66 | S70° 07' 46.03"E     |



**1 SW BARNES RD PLAN**  
 SCALE: 1"=20'

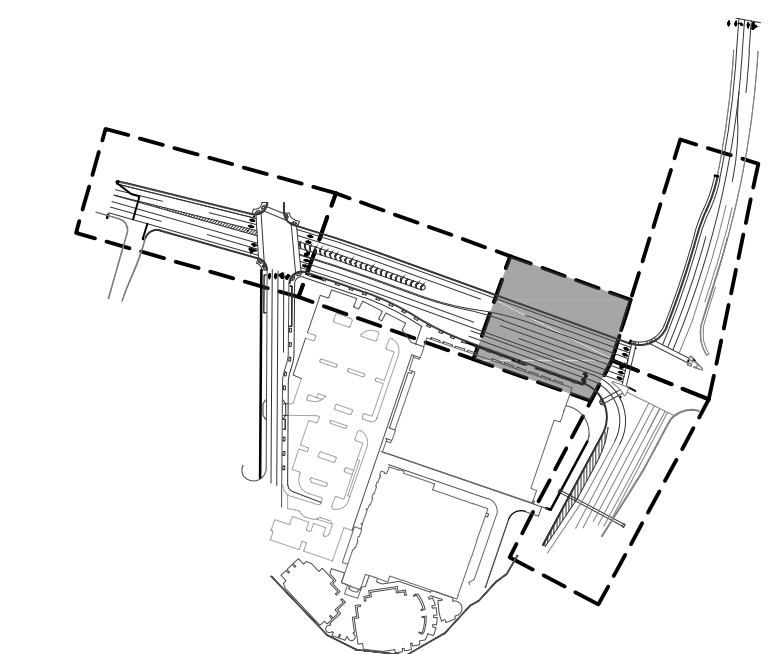


**2 SW BARNES RD CENTERLINE PROFILE**  
 SCALE H: 1"=20'  
 SCALE V: 1"=4'

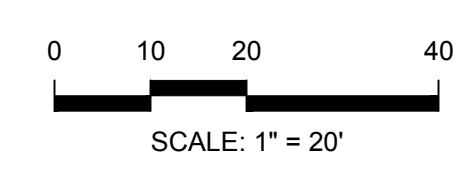
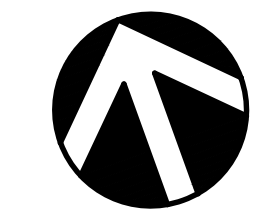
**KEYNOTES**

- CONSTRUCT STANDARD CURB AND GUTTER PER WACO STD DWG 2010.
- CONSTRUCT 10' WIDE CONCRETE SIDEWALK PER WACO STD DWG 2110.
- CONSTRUCT FULL-DEPTH ASPHALT ROADWAY. SEE TYPICAL SECTIONS ON SHEET C450 FOR STRUCTURAL DETAILS.
- 2" ASPHALT PAVEMENT GRIND AND INLAY. SEE TYPICAL SECTIONS ON SHEET C450 FOR DETAILS.
- SAWCUT EXISTING ASPHALT PAVEMENT.
- CONSTRUCT ADA CURB RAMP PER WACO STD DWG 2130, WITH DETECTABLE WARNING SURFACE PER ODOT STD DWG RD758. SEE SHEETS C253 & C254 FOR CURB RAMP DIMENSION AND GRADING DETAILS.
- GRADE 11" WIDE BENCH FOR FUTURE SIDEWALK CONSTRUCTION.
- CONSTRUCT 4x8" TREE WELLS IN PROPOSED SIDEWALK. SEE STREET TREE PLAN (L150) FOR DETAILS.
- CONSTRUCT ADA CURB RAMP PER ODOT STD DWG RD755, WITH DETECTABLE WARNING SURFACE PER ODOT STD DWG RD758. SEE SHEETS C253 & C254 FOR CURB RAMP DIMENSION AND GRADING DETAILS.
- REMOVE EXISTING PUSH BUTTON POLE. SEE INTERCONNECT PLANS FOR NEW PUSH BUTTON POLE LOCATION.
- ADJUST EXISTING TELECOM MANHOLE RIM TO FINISHED SURFACE GRADE.
- REMOVE EXISTING FIRE HYDRANT, VALVE, AND 6" PIPE TO MAIN. INSTALL NEW FIRE HYDRANT WITH 6" D.I. PIPE AND GATE VALVE PER TVWD STD DWGS 401, 402, 403, 502, AND 503. COORDINATE RELOCATION WITH TVWD.
- ADJUST EXISTING WATER VALVE COVERS (4) TO FINAL GRADE AS NEEDED.
- ADJUST EXISTING GAS VALVE COVER TO FINAL GRADE AS NEEDED.
- REMOVE EXISTING TRAFFIC SIGNAL JBOX. SEE INTERCONNECT PLANS FOR NEW TRAFFIC SIGNAL JBOX LOCATION.
- RELOCATE EXISTING WATER METER AND STANDPIPE OUTSIDE OF PROPOSED SIDEWALK WITH D.I. PIPE. COORDINATE RELOCATION WITH TVWD.

Received  
 Planning Division  
 05/29/2019  
 3:07pm



**KEY MAP**



SCALE: 1" = 20'

PROJECT  
**LIFE TIME BEAVERTON**  
 LIFE TIME  
 BEAVERTON, OR  
 SHEET TITLE  
**SW BARNES RD CENTERLINE PLAN & PROFILE**

COUNTY CASE FILE  
 #CP19-911  
 100% SUBMITTAL



DATE: 05/01/19  
 DESIGN: NJRU  
 DRAWN: NJRU

SHEET NO.  
**C154**  
 PROJECT NO. LTRF0000-0003

PLOT DATE: 5/29/2019 9:32 AM  
 SAVE DATE: 5/15/2019 5:08 PM  
 Drawing File: P:\LTFR0000\0003\CADD\DCS\DCS\PP-01-LTRF0003.dwg  
 By: Becky Berry  
 By: NJRU